

---

## Product Datasheet

### LIMK1/2 (phospho-T508/505) antibody (orb214192)

**Description**

Rabbit polyclonal antibody to LIMK1/2

**Species/Host**

Rabbit

**Reactivity**

Human, Rat

**Conjugation**

Unconjugated

**Tested Applications**

IF, IH, WB

**Immunogen**

KLH-conjugated synthetic phosphopeptide corresponding to residues surrounding T508/505 of human LIMK1/2 protein. The exact sequence is proprietary.

**Target**

LIMK1; LIMK2

**Preservatives**

Liquid in 0.42% Potassium phosphate, 0.87% Sodium chloride, pH 7.3, 30% glycerol, and 0.01% sodium azide.

**Form/Appearance**

Liquid in 0.42% Potassium phosphate, 0.87% Sodium chloride, pH 7.3, 30% glycerol, and 0.01% sodium azide.

**Storage**

Maintain refrigerated at 2-8°C for up to 2 weeks. For long term storage store at -20°C in small aliquots to prevent freeze-thaw cycles.

**Note**

For research use only

**Clonality**

Polyclonal

**Source**

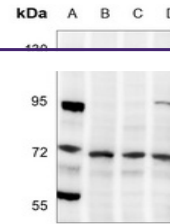
Rabbit

**Uniprot ID**
[P53669](#), [P53667](#)
**Entrez**
[3984](#)
**Dilution Range**

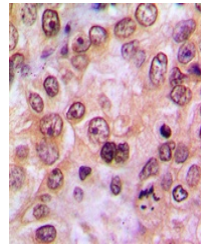
WB: 1-500-1-1000, IHC-P: 1-100-1-200, IF/ICC: 1-100-1-500

**Expiration Date**

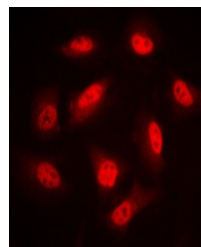
12 months from date of receipt.



Western blot analysis of LIMK1/2 (Phospho...



Immunohistochemical analysis of LIMK1/2 ...



Immunofluorescent analysis of LIMK1/2 (P...