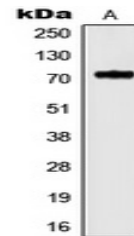


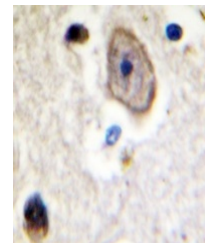
Product Datasheet

KCNC4 antibody (orb214153)

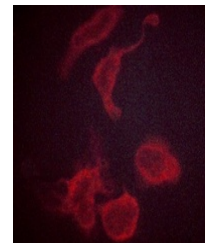
Description	Rabbit polyclonal antibody to KCNC4
Species/Host	Rabbit
Reactivity	Human, Mouse, Rat
Conjugation	Unconjugated
Tested Applications	IF, IH, WB
Immunogen	KLH-conjugated synthetic peptide encompassing a sequence within the N-term region of human Kv3.4. The exact sequence is proprietary.
Target	KCNC4
Preservatives	Liquid in 0.42% Potassium phosphate, 0.87% Sodium chloride, pH 7.3, 30% glycerol, and 0.01% sodium azide.
Form/Appearance	Liquid in 0.42% Potassium phosphate, 0.87% Sodium chloride, pH 7.3, 30% glycerol, and 0.01% sodium azide.
Storage	Maintain refrigerated at 2-8°C for up to 2 weeks. For long term storage store at -20°C in small aliquots to prevent freeze-thaw cycles.
Note	For research use only
Clonality	Polyclonal
Source	Rabbit
Uniprot ID	Q63734 , Q03721 , Q8R1C0
Entrez	3749 , 684516 , 99738
Dilution Range	WB: 1-500-1-1000
Expiration Date	12 months from date of receipt.



Western blot analysis of Kv3.4 expressio...



Immunohistochemical analysis of Kv3.4 st...



Immunofluorescent analysis of Kv3.4 stai...