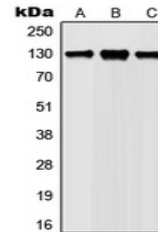


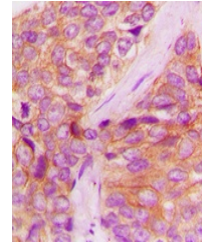
Product Datasheet

JAK1 (phospho-Y1022) antibody (orb214133)

Description	Rabbit polyclonal antibody to JAK1
Species/Host	Rabbit
Reactivity	Human, Mouse, Porcine, Rat
Conjugation	Unconjugated
Tested Applications	IH, WB
Immunogen	KLH-conjugated synthetic phosphopeptide corresponding to residues surrounding Y1022 of human JAK1 protein. The exact sequence is proprietary.
Target	JAK1
Preservatives	Liquid in 0.42% Potassium phosphate, 0.87% Sodium chloride, pH 7.3, 30% glycerol, and 0.01% sodium azide.
Form/Appearance	Liquid in 0.42% Potassium phosphate, 0.87% Sodium chloride, pH 7.3, 30% glycerol, and 0.01% sodium azide.
Storage	Maintain refrigerated at 2-8°C for up to 2 weeks. For long term storage store at -20°C in small aliquots to prevent freeze-thaw cycles.
Note	For research use only
Clonality	Polyclonal
Source	Rabbit
Uniprot ID	P23458, P52332
Entrez	3716
Dilution Range	WB: 1-500-1-1000, IHC-P: 1-100-1-200
Expiration Date	12 months from date of receipt.



Western blot analysis of JAK1 (Phospho-Y...



Immunohistochemical analysis of JAK1 (Ph...