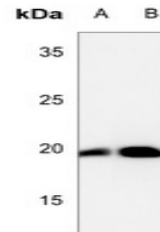


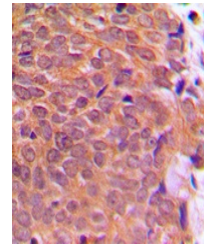
Product Datasheet

CFL1 (phospho-S3) antibody (orb214132)

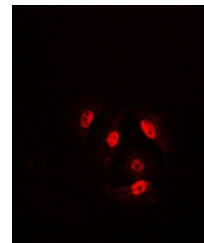
Description	Rabbit polyclonal antibody to CFL1
Species/Host	Rabbit
Reactivity	Human, Mouse, Porcine, Primate, Rat, Sheep
Conjugation	Unconjugated
Tested Applications	IF, IH, WB
Immunogen	KLH-conjugated synthetic phosphopeptide corresponding to residues surrounding S3 of human Cofilin protein. The exact sequence is proprietary.
Target	CFL1
Preservatives	Liquid in 0.42% Potassium phosphate, 0.87% Sodium chloride, pH 7.3, 30% glycerol, and 0.01% sodium azide.
Form/Appearance	Liquid in 0.42% Potassium phosphate, 0.87% Sodium chloride, pH 7.3, 30% glycerol, and 0.01% sodium azide.
Storage	Maintain refrigerated at 2-8°C for up to 2 weeks. For long term storage store at -20°C in small aliquots to prevent freeze-thaw cycles.
Note	For research use only
Clonality	Polyclonal
Source	Rabbit
Uniprot ID	P45592, P18760, P23528
Entrez	12631, 29271, 1072
Dilution Range	WB: 1-500-1-1000, IHC-P: 1-100-1-200, IF/ICC: 1-100-1-500
Expiration Date	12 months from date of receipt.



Western blot analysis of Cofilin (Phospho-S3) antibody



Immunohistochemical analysis of Cofilin (Phospho-S3) antibody



Immunofluorescent analysis of Cofilin (Phospho-S3) antibody