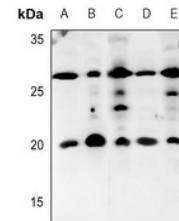


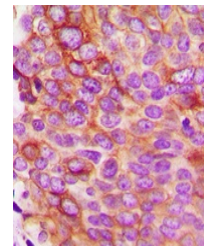
Product Datasheet

IL5 antibody (orb214100)

Description	Rabbit polyclonal antibody to IL5
Species/Host	Rabbit
Reactivity	Human, Mouse, Rat
Conjugation	Unconjugated
Tested Applications	IH, WB
Immunogen	KLH-conjugated synthetic peptide encompassing a sequence within the center region of human IL-5. The exact sequence is proprietary.
Target	IL5
Preservatives	Liquid in 0.42% Potassium phosphate, 0.87% Sodium chloride, pH 7.3, 30% glycerol, and 0.01% sodium azide.
Form/Appearance	Liquid in 0.42% Potassium phosphate, 0.87% Sodium chloride, pH 7.3, 30% glycerol, and 0.01% sodium azide.
Storage	Maintain refrigerated at 2-8°C for up to 2 weeks. For long term storage store at -20°C in small aliquots to prevent freeze-thaw cycles.
Note	For research use only
Clonality	Polyclonal
Source	Rabbit
Uniprot ID	Q08125 , P04401 , P05113
Entrez	16191 , 3567
Dilution Range	WB: 1-500-1-1000, IHC-P: 1-100-1-200, IP: 1-10-1-100
Expiration Date	12 months from date of receipt.



Western blot analysis of IL-5 expression...



Immunohistochemical analysis of IL-5 sta...