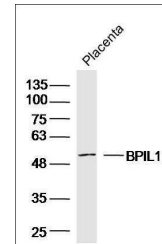


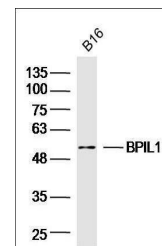
Product Datasheet

BPIL1 antibody (orb2141)

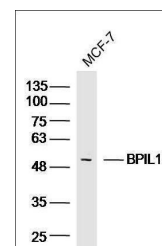
Description	BPIL1 antibody
Species/Host	Rabbit
Reactivity	Human, Mouse
Conjugation	Unconjugated
Tested Applications	ELISA, IF, IHC-Fr, IHC-P, WB
Immunogen	KLH conjugated synthetic peptide derived from human BPIL1 (1-100/458 aa)
Target	BPIL1
Preservatives	0.01M TBS(pH7.4) with 1% rAlbumin, 0.03% Proclin300 and 50% Glycerol.
Form/Appearance	Liquid
Concentration	1mg/ml
Storage	Shipped at 4°C. Store at -20 °C for one year. Avoid repeated freeze/thaw cycles.
Note	For research use only
Isotype	IgG
Clonality	Polyclonal
MW	47 kDa
Uniprot ID	Q8N4F0
Expiration Date	12 months from date of receipt.



Western blot analysis of Mouse Placenta ...



Western blot analysis of B16 Mouse cell ...



Western blot analysis of MCF-7 Human cel...