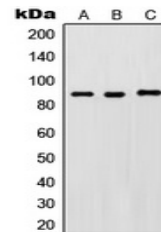


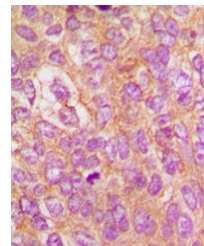
Product Datasheet

IKK beta (phospho-Y188) antibody (orb214091)

Description	Rabbit polyclonal antibody to IKKB
Species/Host	Rabbit
Reactivity	Human, Mouse, Porcine, Rat
Conjugation	Unconjugated
Tested Applications	IH, WB
Immunogen	KLH-conjugated synthetic phosphopeptide corresponding to residues surrounding Y188 of human IKK beta protein. The exact sequence is proprietary.
Target	IKKB
Preservatives	Liquid in 0.42% Potassium phosphate, 0.87% Sodium chloride, pH 7.3, 30% glycerol, and 0.01% sodium azide.
Form/Appearance	Liquid in 0.42% Potassium phosphate, 0.87% Sodium chloride, pH 7.3, 30% glycerol, and 0.01% sodium azide.
Storage	Maintain refrigerated at 2-8°C for up to 2 weeks. For long term storage store at -20°C in small aliquots to prevent freeze-thaw cycles.
Note	For research use only
Clonality	Polyclonal
Source	Rabbit
Uniprot ID	088351, 014920, Q9QY78
Entrez	3551, 16150, 84351
Dilution Range	WB: 1-500-1-1000, IHC-P: 1-100-1-200
Expiration Date	12 months from date of receipt.



Western blot analysis of IKK beta (Phosp...



Immunohistochemical analysis of IKK beta...