
Product Datasheet

IGF1 R (phospho-Y1165/Y1166) antibody (orb214085)

Description

Rabbit polyclonal antibody to IGF1R

Species/Host

Rabbit

Reactivity

Human, Mouse, Rat, Zebrafish

Conjugation

Unconjugated

Tested

IH, WB

Applications
Immunogen

KLH-conjugated synthetic phosphopeptide corresponding to residues surrounding Y1165/Y1166 of human IGF1 Receptor protein. The exact sequence is proprietary.

Target

IGF1R

Preservatives

Liquid in 0.42% Potassium phosphate, 0.87% Sodium chloride, pH 7.3, 30% glycerol, and 0.01% sodium azide.

Form/Appearance

Liquid in 0.42% Potassium phosphate, 0.87% Sodium chloride, pH 7.3, 30% glycerol, and 0.01% sodium azide.

Storage

Maintain refrigerated at 2-8°C for up to 2 weeks. For long term storage store at -20°C in small aliquots to prevent freeze-thaw cycles.

Note

For research use only

Clonality

Polyclonal

Source

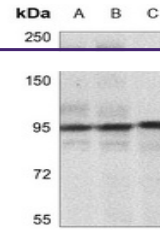
Rabbit

Uniprot ID
[P24062](#), [P08069](#), [Q60751](#)
Entrez
[16001](#), [25718](#), [3480](#)
Dilution Range

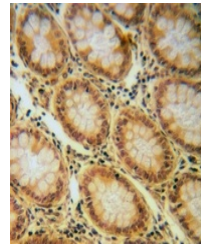
WB: 1-500-1-1000

Expiration Date

12 months from date of receipt.



Western blot analysis of IGF1 Receptor (...



Immunohistochemical analysis of IGF1 Rec...