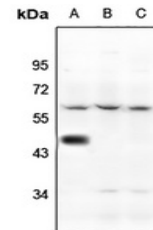


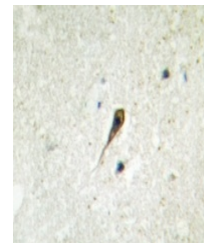
Product Datasheet

HTR1A antibody (orb214069)

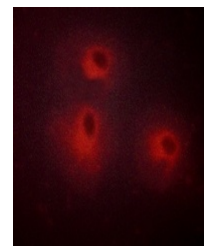
Description	Rabbit polyclonal antibody to HTR1A
Species/Host	Rabbit
Reactivity	Human, Rabbit, Rat
Conjugation	Unconjugated
Tested Applications	IF, IH, WB
Immunogen	KLH-conjugated synthetic peptide encompassing a sequence within the C-term region of human 5-HT1A. The exact sequence is proprietary.
Target	HTR1A
Preservatives	Liquid in 0.42% Potassium phosphate, 0.87% Sodium chloride, pH 7.3, 30% glycerol, and 0.01% sodium azide.
Form/Appearance	Liquid in 0.42% Potassium phosphate, 0.87% Sodium chloride, pH 7.3, 30% glycerol, and 0.01% sodium azide.
Storage	Maintain refrigerated at 2-8°C for up to 2 weeks. For long term storage store at -20°C in small aliquots to prevent freeze-thaw cycles.
Note	For research use only
Clonality	Polyclonal
Source	Rabbit
Uniprot ID	P08908, P19327
Entrez	24473, 3350
Dilution Range	WB: 1-500-1-1000
Expiration Date	12 months from date of receipt.



Western blot analysis of 5-HT1A expressi...



Immunohistochemical analysis of 5-HT1A S...



Immunofluorescent analysis of 5-HT1A sta...