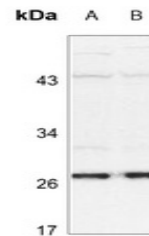


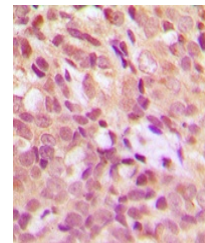
Product Datasheet

HSPB1 (phospho-S15) antibody (orb214064)

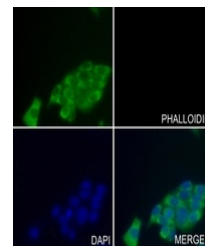
| | |
|----------------------------|--|
| Description | Rabbit polyclonal antibody to HSPB1 |
| Species/Host | Rabbit |
| Reactivity | Human, Primate |
| Conjugation | Unconjugated |
| Tested Applications | IF, IH, WB |
| Immunogen | KLH-conjugated synthetic phosphopeptide corresponding to residues surrounding S15 of human HSP27 protein. The exact sequence is proprietary. |
| Target | HSPB1 |
| Preservatives | Liquid in 0.42% Potassium phosphate, 0.87% Sodium chloride, pH 7.3, 30% glycerol, and 0.01% sodium azide. |
| Form/Appearance | Liquid in 0.42% Potassium phosphate, 0.87% Sodium chloride, pH 7.3, 30% glycerol, and 0.01% sodium azide. |
| Storage | Maintain refrigerated at 2-8°C for up to 2 weeks. For long term storage store at -20°C in small aliquots to prevent freeze-thaw cycles. |
| Note | For research use only |
| Clonality | Polyclonal |
| Source | Rabbit |
| Uniprot ID | P04792 |
| Entrez | 3315 |
| Dilution Range | WB: 1-500-1-1000, IHC-P: 1-100-1-200, IP: 1-10-1-100 |
| Expiration Date | 12 months from date of receipt. |



Western blot analysis of HSP27 (Phospho-...)



Immunohistochemical analysis of HSP27 (P...)



Immunofluorescent analysis of HSP27 (Pho...)