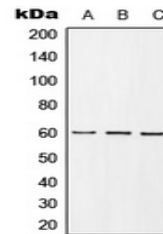


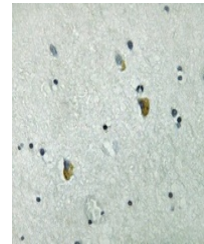
Product Datasheet

GRB10 (phospho-Y67) antibody (orb214005)

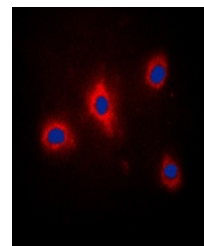
Description	Rabbit polyclonal antibody to GRB10
Species/Host	Rabbit
Reactivity	Human, Mouse, Rat
Conjugation	Unconjugated
Tested Applications	IF, IH, WB
Immunogen	KLH-conjugated synthetic phosphopeptide corresponding to residues surrounding Y67 of human GRB10 protein. The exact sequence is proprietary.
Target	GRB10
Preservatives	Liquid in 0.42% Potassium phosphate, 0.87% Sodium chloride, pH 7.3, 30% glycerol, and 0.01% sodium azide.
Form/Appearance	Liquid in 0.42% Potassium phosphate, 0.87% Sodium chloride, pH 7.3, 30% glycerol, and 0.01% sodium azide.
Storage	Maintain refrigerated at 2-8°C for up to 2 weeks. For long term storage store at -20°C in small aliquots to prevent freeze-thaw cycles.
Note	For research use only
Clonality	Polyclonal
Source	Rabbit
Uniprot ID	Q60760 , Q13322 , P0CE43
Entrez	14783 , 498416 , 2887
Dilution Range	WB: 1-500-1-1000, IF/ICC: 1-100-1-500
Expiration Date	12 months from date of receipt.



Western blot analysis of GRB10 (Phospho-...



Immunohistochemical analysis of GRB10 (P...



Immunofluorescent analysis of GRB10 (Pho...