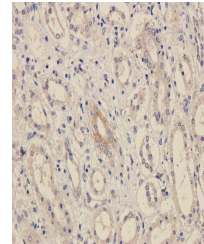


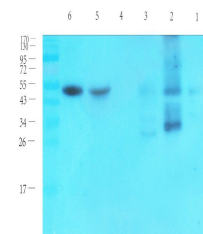
Product Datasheet

FPR1 antibody (orb213947)

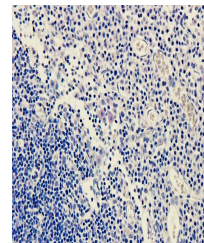
Description	FPR1 antibody
Species/Host	Rabbit
Reactivity	Guinea pig, Human, Mouse, Porcine, Rat
Conjugation	Unconjugated
Tested Applications	IHC-P, WB
Immunogen	KLH conjugated synthetic peptide derived from human FPR1. Please contact us for the exact immunogen sequence. The peptide is available as orb12947.
Target	FPR1. Recognizes endogenous levels of FPR1 protein.
Form/Appearance	10 mM PBS, 0.02% sodium azide
Storage	Store at 4°C for short term and at -20°C for long term storage. Avoid freeze/thaw cycles.
Note	For research use only
Isotype	IgG
Clonality	Polyclonal
Purity	Polyclonal antibodies are purified by peptide affinity chromatography
MW	38 kDa
Uniprot ID	P21462 , P33766
Entrez	2357
Dilution Range	WB: 1-200-500, IHC-P: 1-50-300
Expiration Date	12 months from date of receipt.



Immunohistochemical staining of pig kidn...



Western blot analysis of mouse liver (la...



IHC-P image of guinea pig lymph node tis...