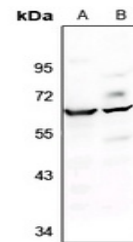


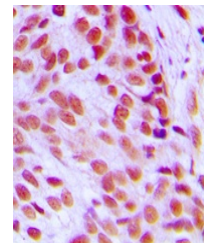
Product Datasheet

FOS antibody (orb213945)

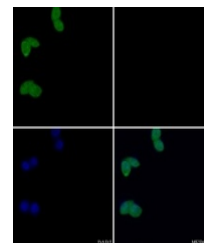
Description	Rabbit polyclonal antibody to FOS
Species/Host	Rabbit
Reactivity	Human, Mouse, Porcine, Rat, Sheep
Conjugation	Unconjugated
Tested Applications	IF, IH, IP, WB
Immunogen	KLH-conjugated synthetic peptide encompassing a sequence within the N-term region of human c-FOS. The exact sequence is proprietary.
Target	FOS
Preservatives	Liquid in 0.42% Potassium phosphate, 0.87% Sodium chloride, pH 7.3, 30% glycerol, and 0.01% sodium azide.
Form/Appearance	Liquid in 0.42% Potassium phosphate, 0.87% Sodium chloride, pH 7.3, 30% glycerol, and 0.01% sodium azide.
Storage	Maintain refrigerated at 2-8°C for up to 2 weeks. For long term storage store at -20°C in small aliquots to prevent freeze-thaw cycles.
Note	For research use only
Clonality	Polyclonal
Source	Rabbit
Uniprot ID	P01100 , P12841 , P01101
Entrez	14281 , 2353 , 314322
Dilution Range	WB: 1-500-1-1000, IHC-P: 1-100-1-200
Expiration Date	12 months from date of receipt.



Western blot analysis of c-FOS expression...



Immunohistochemical analysis of c-FOS staining...



Immunofluorescent analysis of c-FOS staining...