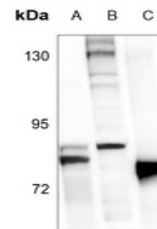


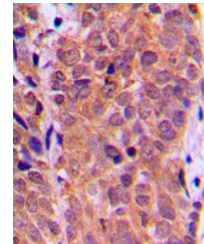
Product Datasheet

FOXO1 (phospho-S319) antibody (orb213937)

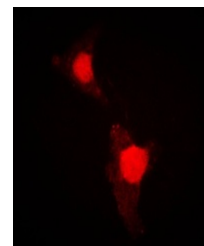
Description	Rabbit polyclonal antibody to FOXO1
Species/Host	Rabbit
Reactivity	Human, Mouse, Porcine, Primate, Rat
Conjugation	Unconjugated
Tested Applications	IF, IH, WB
Immunogen	KLH-conjugated synthetic phosphopeptide corresponding to residues surrounding S319 of human FOXO1 protein. The exact sequence is proprietary.
Target	FOXO1
Preservatives	Liquid in 0.42% Potassium phosphate, 0.87% Sodium chloride, pH 7.3, 30% glycerol, and 0.01% sodium azide.
Form/Appearance	Liquid in 0.42% Potassium phosphate, 0.87% Sodium chloride, pH 7.3, 30% glycerol, and 0.01% sodium azide.
Storage	Maintain refrigerated at 2-8°C for up to 2 weeks. For long term storage store at -20°C in small aliquots to prevent freeze-thaw cycles.
Note	For research use only
Clonality	Polyclonal
Source	Rabbit
Uniprot ID	Q12778 , G3V7R4 , Q9R1E0
Entrez	2308 , 84482 , 56458
Dilution Range	WB: 1-500-1-1000, IHC-P: 1-100-1-200, IF/ICC: 1-100-1-500
Expiration Date	12 months from date of receipt.



Western blot analysis of FOXO1 (Phospho-...



Immunohistochemical analysis of FOXO1 (P...



Immunofluorescent analysis of FOXO1 (Pho...