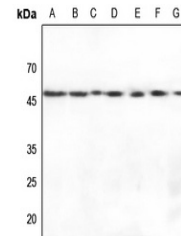


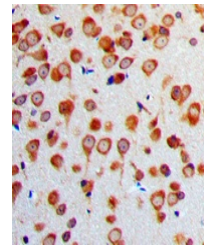
Product Datasheet

ENO2 antibody (orb213894)

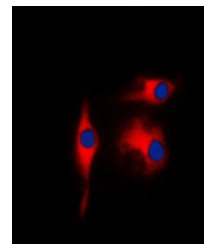
Description	Rabbit polyclonal antibody to ENO2
Species/Host	Rabbit
Reactivity	Human, Mouse, Primate, Rat, Zebrafish
Conjugation	Unconjugated
Tested Applications	FC, IF, IH, WB
Immunogen	KLH-conjugated synthetic peptide encompassing a sequence within the C-term region of human Gamma-enolase. The exact sequence is proprietary.
Target	ENO2
Preservatives	Liquid in 0.42% Potassium phosphate, 0.87% Sodium chloride, pH 7.3, 30% glycerol, and 0.01% sodium azide.
Form/Appearance	Liquid in 0.42% Potassium phosphate, 0.87% Sodium chloride, pH 7.3, 30% glycerol, and 0.01% sodium azide.
Storage	Maintain refrigerated at 2-8°C for up to 2 weeks. For long term storage store at -20°C in small aliquots to prevent freeze-thaw cycles.
Note	For research use only
Clonality	Polyclonal
Source	Rabbit
Uniprot ID	P09104 , P07323 , P17183
Entrez	24334 , 13807 , 100911625 , 2026
Dilution Range	WB: 1-500-1-1000, IHC-P: 1-100-1-200, IF/ICC: 1-100-1-500, FACS: 1-100-1-200
Expiration Date	12 months from date of receipt.



Western blot analysis of Gamma-enolase e...



Immunohistochemical analysis of Gamma-en...



Immunofluorescent analysis of Gamma-enol...