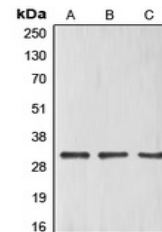


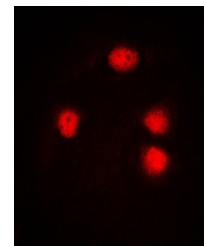
Product Datasheet

ELF5 antibody (orb213890)

Description	Rabbit polyclonal antibody to ELF5
Species/Host	Rabbit
Reactivity	Human, Mouse, Rat
Conjugation	Unconjugated
Tested Applications	IF, IP, WB
Immunogen	KLH-conjugated synthetic peptide encompassing a sequence within the C-term region of human ELF5. The exact sequence is proprietary.
Target	ELF5
Preservatives	Liquid in 0.42% Potassium phosphate, 0.87% Sodium chloride, pH 7.3, 30% glycerol, and 0.01% sodium azide.
Form/Appearance	Liquid in 0.42% Potassium phosphate, 0.87% Sodium chloride, pH 7.3, 30% glycerol, and 0.01% sodium azide.
Storage	Maintain refrigerated at 2-8°C for up to 2 weeks. For long term storage store at -20°C in small aliquots to prevent freeze-thaw cycles.
Note	For research use only
Clonality	Polyclonal
Source	Rabbit
Uniprot ID	Q8VDK3 , Q9UKW6
Entrez	13711 , 2001
Dilution Range	WB: 1-500-1-1000, IF/ICC: 1-100-1-500, IP: 1-10-1-100
Expiration Date	12 months from date of receipt.



Western blot analysis of ELF5 expression...



Immunofluorescent analysis of ELF5 stain...