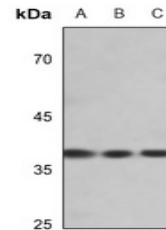


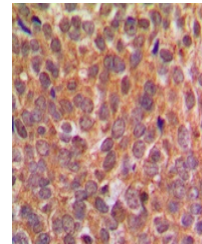
Product Datasheet

EIF2S1 (phospho-S51) antibody (orb213882)

Description	Rabbit polyclonal antibody to EIF2S1
Species/Host	Rabbit
Reactivity	Human, Mouse, Porcine, Rat, Zebrafish
Conjugation	Unconjugated
Tested Applications	IH, WB
Immunogen	KLH-conjugated synthetic phosphopeptide corresponding to residues surrounding S51 of human EIF2S1 protein. The exact sequence is proprietary.
Target	EIF2S1
Preservatives	Liquid in 0.42% Potassium phosphate, 0.87% Sodium chloride, pH 7.3, 30% glycerol, and 0.01% sodium azide.
Form/Appearance	Liquid in 0.42% Potassium phosphate, 0.87% Sodium chloride, pH 7.3, 30% glycerol, and 0.01% sodium azide.
Storage	Maintain refrigerated at 2-8°C for up to 2 weeks. For long term storage store at -20°C in small aliquots to prevent freeze-thaw cycles.
Note	For research use only
Clonality	Polyclonal
Source	Rabbit
Uniprot ID	P68101, P05198, Q6ZWX6
Entrez	13665, 54318, 1965
Dilution Range	WB: 1-500-1-1000, IHC-P: 1-100-1-200, IP: 1-10-1-100
Expiration Date	12 months from date of receipt.



Western blot analysis of EIF2S1 (Phospho...



Immunohistochemical analysis of EIF2S1 (...)