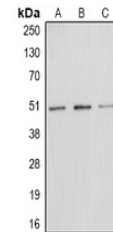


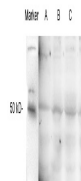
Product Datasheet

E2F1 (phospho-T433) antibody (orb213865)

Description	Rabbit polyclonal antibody to E2F1
Species/Host	Rabbit
Reactivity	Human, Mouse, Primate, Rat
Conjugation	Unconjugated
Tested Applications	WB
Immunogen	KLH-conjugated synthetic phosphopeptide corresponding to residues surrounding T433 of human E2F1 protein. The exact sequence is proprietary.
Target	E2F1
Preservatives	Liquid in 0.42% Potassium phosphate, 0.87% Sodium chloride, pH 7.3, 30% glycerol, and 0.01% sodium azide.
Form/Appearance	Liquid in 0.42% Potassium phosphate, 0.87% Sodium chloride, pH 7.3, 30% glycerol, and 0.01% sodium azide.
Storage	Maintain refrigerated at 2-8°C for up to 2 weeks. For long term storage store at -20°C in small aliquots to prevent freeze-thaw cycles.
Note	For research use only
Clonality	Polyclonal
Source	Rabbit
Uniprot ID	O09139 , Q61501 , Q01094
Entrez	1869 , 13555
Dilution Range	WB: 1-500-1-1000
Expiration Date	12 months from date of receipt.



Western blot analysis of E2F1 (Phospho-T...)



(Lane A,B,C,D: AMU C cells treated with PMA (1) 1min)

Western blot analysis of E2F1 (Phospho-T...)