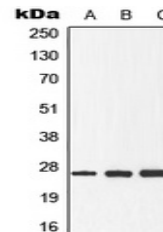


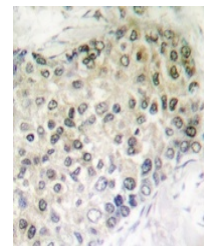
Product Datasheet

DDIT3 (phospho-S30) antibody (orb213842)

Description	Rabbit polyclonal antibody to DDIT3 (phospho-S30)
Species/Host	Rabbit
Reactivity	Human, Mouse, Porcine, Primate, Rat
Conjugation	Unconjugated
Tested Applications	IF, IH, WB
Immunogen	KLH-conjugated synthetic phosphopeptide corresponding to residues surrounding S30 of human GADD153 protein. The exact sequence is proprietary.
Target	DDIT3
Preservatives	Liquid in 0.42% Potassium phosphate, 0.87% Sodium chloride, pH 7.3, 30% glycerol, and 0.01% sodium azide.
Form/Appearance	Liquid in 0.42% Potassium phosphate, 0.87% Sodium chloride, pH 7.3, 30% glycerol, and 0.01% sodium azide.
Storage	Maintain refrigerated at 2-8°C for up to 2 weeks. For long term storage store at -20°C in small aliquots to prevent freeze-thaw cycles.
Note	For research use only
Clonality	Polyclonal
Source	Rabbit
Uniprot ID	Q62857 , P35639 , P35638
Entrez	1649 , 13198
Dilution Range	WB: 1-500-1-1000
Expiration Date	12 months from date of receipt.



Western blot analysis of GADD153 (Phospho-S30)



Immunohistochemical analysis of GADD153

...



Immunofluorescent analysis of GADD153 (Phospho-S30)