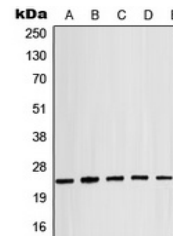


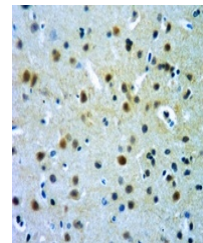
Product Datasheet

CRYAB (phospho-S19) antibody (orb213783)

Description	Rabbit polyclonal antibody to CRYAB
Species/Host	Rabbit
Reactivity	Human, Mouse, Porcine, Primate, Rat, Sheep
Conjugation	Unconjugated
Tested Applications	IH, WB
Immunogen	KLH-conjugated synthetic phosphopeptide corresponding to residues surrounding S19 of human Alpha-crystallin B protein. The exact sequence is proprietary.
Target	CRYAB
Preservatives	Liquid in 0.42% Potassium phosphate, 0.87% Sodium chloride, pH 7.3, 30% glycerol, and 0.01% sodium azide.
Form/Appearance	Liquid in 0.42% Potassium phosphate, 0.87% Sodium chloride, pH 7.3, 30% glycerol, and 0.01% sodium azide.
Storage	Maintain refrigerated at 2-8°C for up to 2 weeks. For long term storage store at -20°C in small aliquots to prevent freeze-thaw cycles.
Note	For research use only
Clonality	Polyclonal
Source	Rabbit
Uniprot ID	P23927 , P23928 , P02511
Entrez	25420 , 1410 , 12955
Dilution Range	WB: 1-500-1-1000
Expiration Date	12 months from date of receipt.



Western blot analysis of Alpha-crystalli...



Immunohistochemical analysis of Alpha-cr...