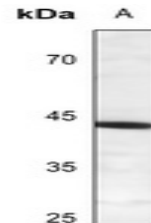


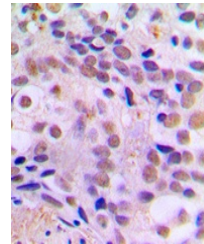
Product Datasheet

CREB1 (phospho-S121) antibody (orb213774)

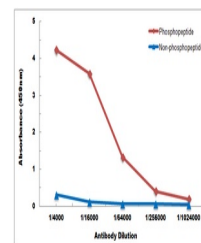
Description	Rabbit polyclonal antibody to CREB1 (phospho-S121)
Species/Host	Rabbit
Reactivity	Human, Mouse, Porcine, Rat, Sheep, Zebrafish
Conjugation	Unconjugated
Tested Applications	IH, WB
Immunogen	KLH-conjugated synthetic phosphopeptide corresponding to residues surrounding S121 of human CREB protein. The exact sequence is proprietary.
Target	CREB1
Preservatives	Liquid in 0.42% Potassium phosphate, 0.87% Sodium chloride, pH 7.3, 30% glycerol, and 0.01% sodium azide.
Form/Appearance	Liquid in 0.42% Potassium phosphate, 0.87% Sodium chloride, pH 7.3, 30% glycerol, and 0.01% sodium azide.
Storage	Maintain refrigerated at 2-8°C for up to 2 weeks. For long term storage store at -20°C in small aliquots to prevent freeze-thaw cycles.
Note	For research use only
Clonality	Polyclonal
Source	Rabbit
Uniprot ID	Q01147 , P15337 , P16220
Entrez	1385 , 12912 , 81646
Dilution Range	WB: 1-500-1-1000, IHC-P: 1-100-1-200
Expiration Date	12 months from date of receipt.



Western blot analysis of CREB (Phospho-S121)



Immunohistochemical analysis of CREB (Phospho-S121)



Direct ELISA antibody dose-response curve