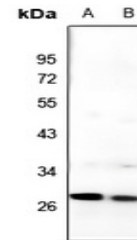


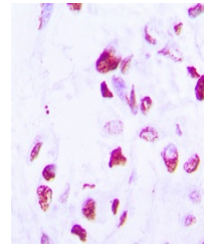
Product Datasheet

CEBPD antibody (orb213725)

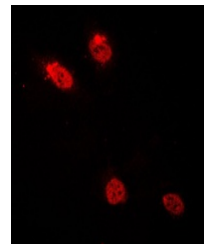
Description	Rabbit polyclonal antibody to CEBPD
Species/Host	Rabbit
Reactivity	Human, Mouse, Rat, Sheep
Conjugation	Unconjugated
Tested Applications	IF, IH, WB
Immunogen	KLH-conjugated synthetic peptide encompassing a sequence within the C-term region of human C/EBP delta/epsilon. The exact sequence is proprietary.
Target	CEBPD; CEBPE
Preservatives	Liquid in 0.42% Potassium phosphate, 0.87% Sodium chloride, pH 7.3, 30% glycerol, and 0.01% sodium azide.
Form/Appearance	Liquid in 0.42% Potassium phosphate, 0.87% Sodium chloride, pH 7.3, 30% glycerol, and 0.01% sodium azide.
Storage	Maintain refrigerated at 2-8°C for up to 2 weeks. For long term storage store at -20°C in small aliquots to prevent freeze-thaw cycles.
Note	For research use only
Clonality	Polyclonal
Source	Rabbit
Uniprot ID	P56261 , Q6PZD9 , Q15744 , Q00322 , P49716 , Q03484
Entrez	1052 , 1053 , 25410 , 110794 , 12609 , 25695
Dilution Range	WB: 1-500-1-1000, IHC-P: 1-100-1-200, IF/ICC: 1-100-1-500
Expiration Date	12 months from date of receipt.



Western blot analysis of C/EBP delta/eps...



Immunohistochemical analysis of C/EBP de...



Immunofluorescent analysis of C/EBP delt...