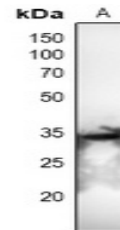


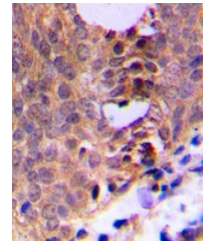
Product Datasheet

CDC2 (phospho-T161) antibody (orb213696)

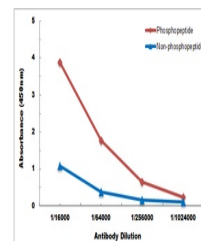
Description	Rabbit polyclonal antibody to CDK1
Species/Host	Rabbit
Reactivity	Human, Mouse, Primate, Rat, Zebrafish
Conjugation	Unconjugated
Tested Applications	IH, WB
Immunogen	KLH-conjugated synthetic phosphopeptide corresponding to residues surrounding T161 of human CDC2 protein. The exact sequence is proprietary.
Target	CDK1; CDK2
Preservatives	Liquid in 0.42% Potassium phosphate, 0.87% Sodium chloride, pH 7.3, 30% glycerol, and 0.01% sodium azide.
Form/Appearance	Liquid in 0.42% Potassium phosphate, 0.87% Sodium chloride, pH 7.3, 30% glycerol, and 0.01% sodium azide.
Storage	Maintain refrigerated at 2-8°C for up to 2 weeks. For long term storage store at -20°C in small aliquots to prevent freeze-thaw cycles.
Note	For research use only
Clonality	Polyclonal
Source	Rabbit
Uniprot ID	P06493
Entrez	983
Dilution Range	WB: 1-500-1-1000, IHC-P: 1-100-1-200, IF/ICC: 1-100-1-500
Expiration Date	12 months from date of receipt.



Western blot analysis of CDC2 (Phospho-T161) antibody.



Immunohistochemical analysis of CDC2 (Phospho-T161) antibody.



Direct ELISA antibody dose-response curve for CDC2 (Phospho-T161) antibody.