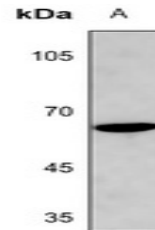


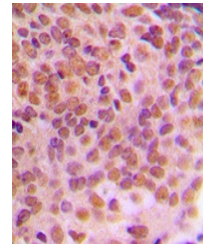
## Product Datasheet

### CCNB1 (phospho-S126) antibody (orb213676)

|                            |   |
|----------------------------|---|
| <b>Description</b>         | Rabbit polyclonal antibody to CCNB1   |
| <b>Species/Host</b>        | Rabbit  |
| <b>Reactivity</b>          | Human, Mouse  |
| <b>Conjugation</b>         | Unconjugated  |
| <b>Tested Applications</b> | IH, WB  |
| <b>Immunogen</b>           | KLH-conjugated synthetic phosphopeptide corresponding to residues surrounding S126 of human Cyclin B1 protein. The exact sequence is proprietary. |
| <b>Target</b>              | CCNB1   |
| <b>Preservatives</b>       | Liquid in 0.42% Potassium phosphate, 0.87% Sodium chloride, pH 7.3, 30% glycerol, and 0.01% sodium azide.   |
| <b>Form/Appearance</b>     | Liquid in 0.42% Potassium phosphate, 0.87% Sodium chloride, pH 7.3, 30% glycerol, and 0.01% sodium azide.   |
| <b>Storage</b>             | Maintain refrigerated at 2-8°C for up to 2 weeks. For long term storage store at -20°C in small aliquots to prevent freeze-thaw cycles.           |
| <b>Note</b>                | For research use only   |
| <b>Clonality</b>           | Polyclonal  |
| <b>Source</b>              | Rabbit  |
| <b>Uniprot ID</b>          | <b>P14635, P24860</b>   |
| <b>Entrez</b>              | <b>891, 268697</b>  |
| <b>Dilution Range</b>      | WB: 1-500-1-1000, IHC-P: 1-100-1-200, IP: 1-10-1-100  |
| <b>Expiration Date</b>     | 12 months from date of receipt.   |



Western blot analysis of Cyclin B1 (Phos...



Immunohistochemical analysis of Cyclin B...