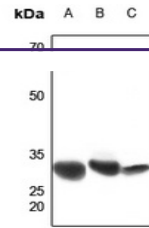

Product Datasheet

Prostaglandin-E(2) 9-reductase antibody (orb213674)

Description

Rabbit polyclonal antibody to Prostaglandin-



Western blot analysis of CBR1 expression...

Species/Host

Rabbit

Reactivity

Human, Mouse, Primate, Rat

Conjugation

Unconjugated

Tested Applications

IF, IH, WB

Immunogen

KLH-conjugated synthetic peptide encompassing a sequence within the center region of human CBR1. The exact sequence is proprietary.

Target

CBR1

Preservatives

Liquid in 0.42% Potassium phosphate, 0.87% Sodium chloride, pH 7.3, 30% glycerol, and 0.01% sodium azide.

Form/Appearance

Liquid in 0.42% Potassium phosphate, 0.87% Sodium chloride, pH 7.3, 30% glycerol, and 0.01% sodium azide.

Storage

Maintain refrigerated at 2-8°C for up to 2 weeks. For long term storage store at -20°C in small aliquots to prevent freeze-thaw cycles.

Note

For research use only

Clonality

Polyclonal

Source

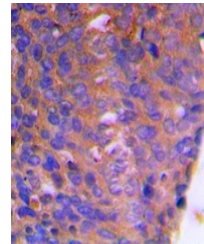
Rabbit

Uniprot ID
[P16152](#)
Entrez
[873](#)
Dilution Range

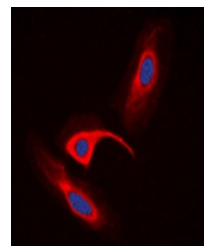
WB: 1-500-1-1000, IHC-P: 1-100-1-200, IF/ICC: 1-100-1-500

Expiration Date

12 months from date of receipt.



Immunohistochemical analysis of CBR1 staining...



Immunofluorescent analysis of CBR1 staining...