

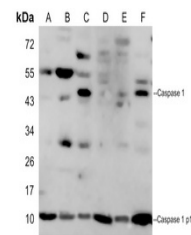
Product Datasheet

Caspase 1 antibody (orb213638)

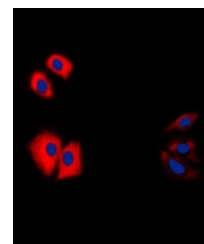
| | |
|----------------------------|--|
| Description | Rabbit polyclonal antibody to Caspase 1 |
| Species/Host | Rabbit |
| Reactivity | Human, Mouse, Rat |
| Conjugation | Unconjugated |
| Tested Applications | IF, WB |
| Immunogen | KLH-conjugated synthetic peptide encompassing a sequence within the C-term region of human Caspase 1. The exact sequence is proprietary. |
| Target | CASP1 |
| Preservatives | Liquid in 0.42% Potassium phosphate, 0.87% Sodium chloride, pH 7.3, 30% glycerol, and 0.01% sodium azide. |
| Form/Appearance | Liquid in 0.42% Potassium phosphate, 0.87% Sodium chloride, pH 7.3, 30% glycerol, and 0.01% sodium azide. |
| Storage | Maintain refrigerated at 2-8°C for up to 2 weeks. For long term storage store at -20°C in small aliquots to prevent freeze-thaw cycles. |
| Note | For research use only |
| Clonality | Polyclonal |
| Source | Rabbit |
| Uniprot ID | P29466 , P43527 , P29452 |
| Entrez | 12362 , 834 |
| Dilution Range | WB: 1-500-1-1000, IF/ICC: 1-100-1-500 |
| Expiration Date | 12 months from date of receipt. |



Western blot analysis of Caspase 1 p10 e...



Western blot analysis of Caspase 1 p10 e...



Immunofluorescent analysis of Caspase 1 ...