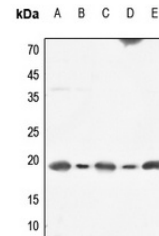


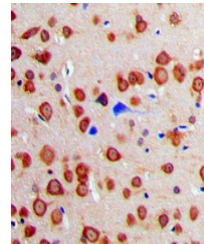
Product Datasheet

CALM1 antibody (orb213633)

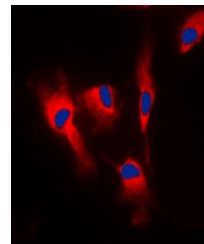
Description	Rabbit polyclonal antibody to CALM1
Species/Host	Rabbit
Reactivity	Human, Mouse, Rabbit, Rat, Sheep, Zebrafish
Conjugation	Unconjugated
Tested Applications	IF, IH, IP, WB
Immunogen	KLH-conjugated synthetic peptide encompassing a sequence within the center region of human Calmodulin. The exact sequence is proprietary.
Target	CALM1
Preservatives	Liquid in 0.42% Potassium phosphate, 0.87% Sodium chloride, pH 7.3, 30% glycerol, and 0.01% sodium azide.
Form/Appearance	Liquid in 0.42% Potassium phosphate, 0.87% Sodium chloride, pH 7.3, 30% glycerol, and 0.01% sodium azide.
Storage	Shipped at 4°C. Upon delivery aliquot and store at -20°C for one year. Avoid freeze/thaw cycles.
Note	For research use only
Clonality	Polyclonal
Source	Rabbit
Uniprot ID	P62158 , P62204 , P62161
Entrez	808 , 12315 , 805 , 24242 , 50663 , 24244 , 12314 , 801 , 12313
Dilution Range	WB: 1-500-1-1000, IHC-P: 1-100-1-200, IF/ICC: 1-100-1-500, IP: 1-10-1-100
Expiration Date	12 months from date of receipt.



Western blot analysis of Calmodulin expr...



Immunohistochemical analysis of Calmodul...



Immunofluorescent analysis of Calmodulin...