
Product Datasheet

C1R antibody (orb213623)

Description

C1R antibody

Species/Host

Rabbit

Reactivity

Human, Monkey, Mouse, Rat

Conjugation

Unconjugated

Tested Applications

ELISA, IHC-P, WB

Immunogen

KLH conjugated synthetic peptide derived from human C1R. Please contact us for the exact immunogen sequence. The peptide is available as orb374838.

Target

C1R. Recognizes endogenous levels of Complement C1R LC protein.

Form/Appearance

10 mM PBS, 0.02% sodium azide

Concentration

- 100 µg (in 200 µl): 0.5 mg/ml- 200 µg (in 400 µl): 0.5 mg/ml

Storage

Store at 4°C for short term and at -20°C for long term storage. Avoid freeze/thaw cycles.

Note

For research use only

Isotype

IgG

Clonality

Polyclonal

Purity

Polyclonal antibodies are purified by peptide affinity chromatography

MW

80 kDa

Uniprot ID
[B5DEH7](#), [P00736](#), [Q8CG16](#)
NCBI
[001724](#), [001733](#)
Entrez
[715](#)
Dilution Range

WB: 1:100-1000, IHC-P: 1:100-800

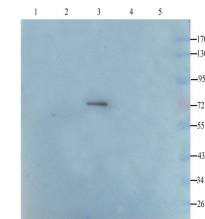
Expiration Date

12 months from date of receipt.

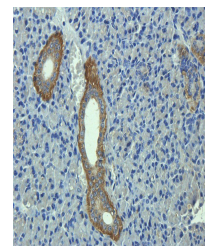


IHC-P image of rat stomach tissue using

...



Western blot analysis of rat lymph node ...



Immunohistochemical staining of paraffin...