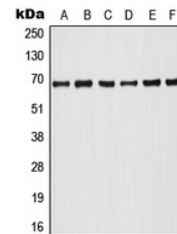


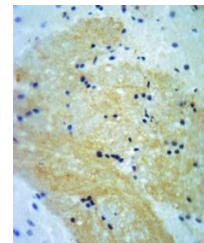
Product Datasheet

A-RAF (phospho-Y302) antibody (orb213579)

Description	Rabbit polyclonal antibody to ARAF
Species/Host	Rabbit
Reactivity	Human, Mouse, Porcine, Rat, Sheep
Conjugation	Unconjugated
Tested Applications	IF, IH, WB
Immunogen	KLH-conjugated synthetic phosphopeptide corresponding to residues surrounding Y302 of human A-RAF protein. The exact sequence is proprietary.
Target	ARAF
Preservatives	Liquid in 0.42% Potassium phosphate, 0.87% Sodium chloride, pH 7.3, 30% glycerol, and 0.01% sodium azide.
Form/Appearance	Liquid in 0.42% Potassium phosphate, 0.87% Sodium chloride, pH 7.3, 30% glycerol, and 0.01% sodium azide.
Storage	Shipped at 4°C. Upon delivery aliquot and store at -20°C for one year. Avoid freeze/thaw cycles.
Note	For research use only
Clonality	Polyclonal
Source	Rabbit
Uniprot ID	P04627 , P14056 , P10398
Entrez	369 , 11836 , 64363
Dilution Range	WB: 1-500-1-1000
Expiration Date	12 months from date of receipt.



Western blot analysis of A-RAF (Phospho-...)



Immunohistochemical analysis of A-RAF (P...)



Immunofluorescent analysis of A-RAF (Pho...)