
Product Datasheet

AKT (phospho-Y315) antibody (orb213540)

Description

Rabbit polyclonal antibody to AKT (phospho-

Species/Host

Rabbit

Reactivity

Human, Mouse, Rat, Zebrafish

Conjugation

Unconjugated

Tested Applications

IF, IH, WB

Immunogen

KLH-conjugated synthetic phosphopeptide corresponding to residues surrounding Y315 of human AKT protein. The exact sequence is proprietary.

Target

AKT1; AKT2; AKT3

Preservatives

Liquid in 0.42% Potassium phosphate, 0.87% Sodium chloride, pH 7.3, 30% glycerol, and 0.01% sodium azide.

Form/Appearance

Liquid in 0.42% Potassium phosphate, 0.87% Sodium chloride, pH 7.3, 30% glycerol, and 0.01% sodium azide.

Storage

Maintain refrigerated at 2-8°C for up to 2 weeks. For long term storage store at -20°C in small aliquots to prevent freeze-thaw cycles.

Note

For research use only

Clonality

Polyclonal

Source

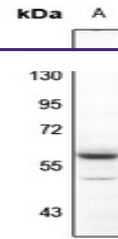
Rabbit

Uniprot ID
[P31750](#), [P31751](#), [Q60823](#), [Q9Y243](#), [P47196](#), [P47197](#), [Q9WUA6](#), [Q63484](#), [P31749](#)
Entrez
[207](#), [11651](#), [29414](#), [10000](#), [25233](#), [208](#), [23797](#), [11652](#), [24185](#)
Dilution Range

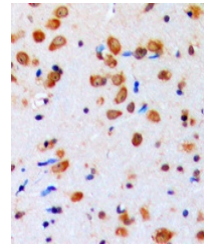
WB: 1-500-1-1000, IHC-P: 1-100-1-200, IF/ICC: 1-100-1-500

Expiration Date

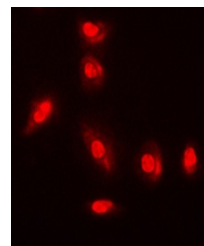
12 months from date of receipt.



Western blot analysis of AKT (Phospho-Y315)



Immunohistochemical analysis of AKT (Phospho-Y315)



Immunofluorescent analysis of AKT (Phospho-Y315)