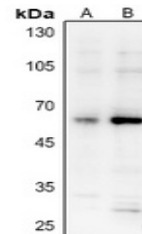


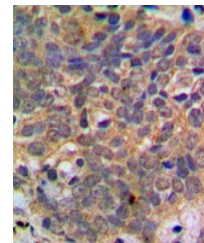
Product Datasheet

AKT (phospho-S473) antibody (orb213538)

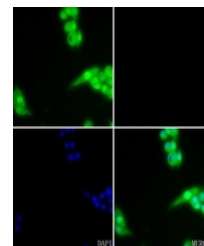
Description	Rabbit polyclonal antibody to AKT (phospho-S473)
Species/Host	Rabbit
Reactivity	Human, Mouse, Rat, Sheep, Zebrafish
Conjugation	Unconjugated
Tested Applications	IF, IH, WB
Immunogen	KLH-conjugated synthetic phosphopeptide corresponding to residues surrounding S473 of human AKT protein. The exact sequence is proprietary.
Target	AKT1; AKT2; AKT3
Preservatives	Liquid in 0.42% Potassium phosphate, 0.87% Sodium chloride, pH 7.3, 30% glycerol, and 0.01% sodium azide.
Form/Appearance	Liquid in 0.42% Potassium phosphate, 0.87% Sodium chloride, pH 7.3, 30% glycerol, and 0.01% sodium azide.
Storage	Shipped at 4°C. Upon delivery aliquot and store at -20°C for one year. Avoid freeze/thaw cycles.
Note	For research use only
Clonality	Polyclonal
Source	Rabbit
Uniprot ID	P31751 , Q60823 , Q9Y243 , Q63484 , Q9WUA6 , P47196 , P31750 , P31749 , P47197
Entrez	11652 , 23797 , 11651 , 208 , 207 , 10000 , 25233 , 29414 , 24185
Dilution Range	WB: 1-500-1-1000, IHC-P: 1-100-1-200
Expiration Date	12 months from date of receipt.



Western blot analysis of AKT (Phospho-S4...



Immunohistochemical analysis of AKT (Pho...



Immunofluorescent analysis of AKT (Phosp...