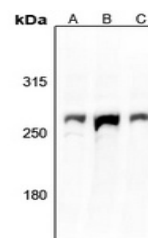


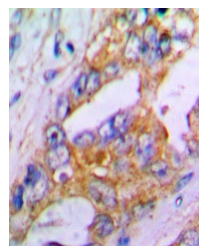
Product Datasheet

ACAN antibody (orb213537)

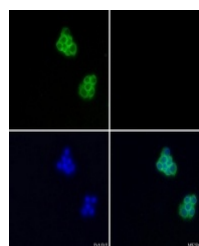
Description	Rabbit polyclonal antibody to ACAN
Species/Host	Rabbit
Reactivity	Human, Mouse, Porcine, Sheep
Conjugation	Unconjugated
Tested Applications	IF, IH, WB
Immunogen	KLH-conjugated synthetic peptide encompassing a sequence within the N-term region of human Aggrecan. The exact sequence is proprietary.
Target	ACAN
Preservatives	Liquid in 0.42% Potassium phosphate, 0.87% Sodium chloride, pH 7.3, 30% glycerol, and 0.01% sodium azide.
Form/Appearance	Liquid in 0.42% Potassium phosphate, 0.87% Sodium chloride, pH 7.3, 30% glycerol, and 0.01% sodium azide.
Storage	Shipped at 4°C. Upon delivery aliquot and store at -20°C for one year. Avoid freeze/thaw cycles.
Note	For research use only
Clonality	Polyclonal
Source	Rabbit
Uniprot ID	P07897 , P16112 , Q61282
Entrez	176 , 11595 , 58968
Dilution Range	WB: 1-500-1-1000, IHC-P: 1-100-1-200
Expiration Date	12 months from date of receipt.



Western blot analysis of Aggrecan expres...



Immunohistochemical analysis of Aggrecan...



Immunofluorescent analysis of Aggrecan S...