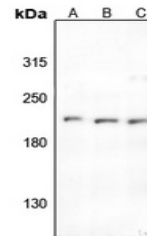


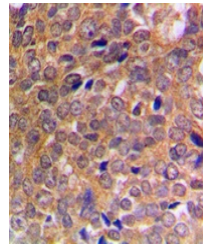
Product Datasheet

ABL1/2 (phospho-Y393/439) antibody (orb213511)

Description	Rabbit polyclonal antibody to ABL1
Species/Host	Rabbit
Reactivity	Human, Mouse, Rat
Conjugation	Unconjugated
Tested Applications	IF, IH, WB
Immunogen	KLH-conjugated synthetic phosphopeptide corresponding to residues surrounding Y393/439 of human ABL1/2 protein. The exact sequence is proprietary.
Target	ABL1; ABL2
Preservatives	Liquid in 0.42% Potassium phosphate, 0.87% Sodium chloride, pH 7.3, 30% glycerol, and 0.01% sodium azide.
Form/Appearance	Liquid in 0.42% Potassium phosphate, 0.87% Sodium chloride, pH 7.3, 30% glycerol, and 0.01% sodium azide.
Storage	Maintain refrigerated at 2-8°C for up to 2 weeks. For long term storage store at -20°C in small aliquots to prevent freeze-thaw cycles.
Note	For research use only
Clonality	Polyclonal
Source	Rabbit
Uniprot ID	P00519 , P42684 , P00520 , Q4JIM5
Entrez	11350 , 27 , 25
Dilution Range	WB: 1-500-1-1000, IHC-P: 1-100-1-200, IF/ICC: 1-100-1-500
Expiration Date	12 months from date of receipt.



Western blot analysis of ABL1/2 (Phospho...



Immunohistochemical analysis of ABL1/2 (...)



Immunofluorescent analysis of ABL1/2 (Phospho-...)