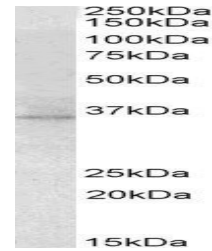


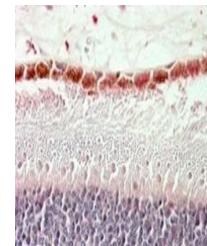
Product Datasheet

RDH5 antibody (orb20661)

Description	Goat polyclonal antibody to RDH5.
Species/Host	Goat
Reactivity	Human
Conjugation	Unconjugated
Tested Applications	ELISA, FC, IF, IHC
Target	RDH5 (aa 19-31)
Preservatives	Supplied at 0.5 mg/ml in Tris saline, 0.02% sodium azide, pH7.3 with 0.5% bovine serum albumin.
Storage	Aliquot and store at -20°C. Minimize freezing and thawing.
Note	For research use only
Application notes	ELISA: Peptide ELISA: antibody detection limit dilution 1:8000.WB: Approx 35kDa band observed in Mouse Eye lysates (calculated MW of 34.8kDa according to Mouse NP_598767.1). Recommended concentration: 2-4 µg/ml.
Protein Sequence	RDRQSLPASNAFV
Clonality	Polyclonal
MW	35
Entrez	5959
Dilution Range	ELISA: 1:8000, WB: 2-4 µg/ml, IHC-P: 5-10µg/ml
Expiration Date	12 months from date of receipt.



Western blot analysis of Mouse Eye lysat...



Immunohistochemical staining of Human Re...