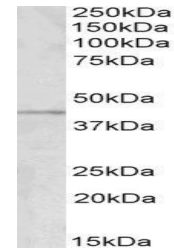


Product Datasheet

GRAMD3 antibody (orb20655)

Description	Goat polyclonal to GRAMD3
Species/Host	Goat
Reactivity	Bovine, Canine, Human, Mouse, Rat
Conjugation	Unconjugated
Tested Applications	ELISA, WB
Target	GRAMD3
Preservatives	Supplied at 0.5 mg/ml in Tris saline, 0.02% sodium azide, pH 7.3 with 0.5% bovine serum albumin. Aliquot and store at -20°C. Minimize freezing and thawing.
Storage	Aliquot and store at -20°C. Minimize freezing and thawing.
Note	For research use only
Application notes	This antibody is expected to recognize all reported isoforms (NP_001139791.1; NP_076416.2; NP_001139792.1; NP_001139793.1; NP_001139794.1).ELISA: Peptide ELISA: antibody detection limit dilution 1:4000.WB: Approx 45kDa band observed in Human Brain (Temporal Cortex) and Mouse Brain lysates (calculated MW of 47.9kDa according to NP_076416.2). Recommended concentration: 1-3 µg/ml.
Protein Sequence	QTPESENSRD
Clonality	Polyclonal
MW	49.9; 47.9; 36.6; 49.6; 46.3
Entrez	65983
Dilution Range	ELISA: 1:4000, WB: 1-3 µg/ml
Expiration Date	12 months from date of receipt.



orb20655
(1µg/ml)
staining of
Human
Temp...