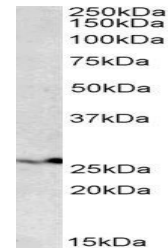


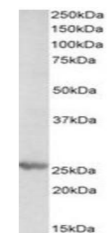
## Product Datasheet

### PSMB4 antibody (orb20647)

<b>Description</b>	Goat polyclonal to PSMB4
<b>Species/Host</b>	Goat
<b>Reactivity</b>	Bovine, Canine, Human, Mouse, Rat
<b>Conjugation</b>	Unconjugated
<b>Tested Applications</b>	ELISA, WB
<b>Target</b>	PSMB4 (aa230-239)
<b>Preservatives</b>	Supplied at 0.5 mg/ml in Tris saline, 0.02% sodium azide, pH 7.3 with 0.5% bovine serum albumin. Aliquot and store at -20°C. Minimize freezing and thawing.
<b>Storage</b>	Aliquot and store at -20°C. Minimize freezing and thawing.
<b>Note</b>	For research use only
<b>Application notes</b>	ELISA: Peptide ELISA: antibody detection limit dilution 1:8000.WB: Approx 25-26kDa band observed in lysates of cell lines HEK293, HeLa, and K562 (calculated MW of 29.1kDa according to NP_002787.2). The observed molecular weight corresponds to earlier findings with different antibodies from other commercial sources. Recommended concentration: 0.1-0.3 µg/ml.
<b>Protein Sequence</b>	NRFQIATVTE
<b>Clonality</b>	Polyclonal
<b>MW</b>	29.2
<b>Entrez</b>	<a href="#">5692</a>
<b>Dilution Range</b>	ELISA: 1:8000, WB: 0.1-0.3 µg/ml
<b>Expiration Date</b>	12 months from date of receipt.



Western blot analysis of HEK293 lysate u...



Western blot analysis of Mouse Liver lys...