

## Product Datasheet

### CIRBP antibody (orb20642)

**Description**

Goat polyclonal to CIRBP

**Species/Host**

Goat

**Reactivity**

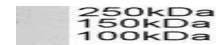
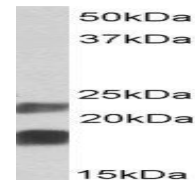
Bovine, Canine, Human, Mouse, Rat

**Conjugation**

Unconjugated

**Tested Applications**

ELISA, FC, IF, WB

**Applications**



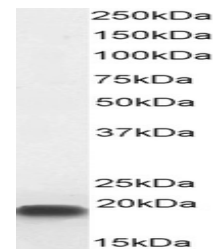
 orb20642  
(0.05ug/ml) staining  
of Mouse T...

**Target**

CIRBP (aa 81-91)

**Preservatives**

Supplied at 0.5 mg/ml in Tris saline, 0.02% sodium azide, pH 7.3 with 0.5% bovine serum albumin. Aliquot and store at -20°C. Minimize freezing and thawing.



 orb20642 (0.03  
µg/mL) staining of  
MCF7 ...

**Storage**

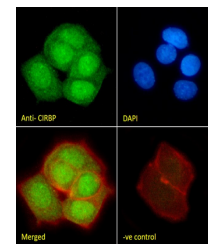
Aliquot and store at -20°C. Minimize freezing and thawing.

**Note**

For research use only

**Application notes**

ELISA: Peptide ELISA: antibody detection limit dilution 1:16000. WB: Approx 18kDa band observed in Mouse and Rat Testis lysates (calculated MW of 18.6kDa according to Mouse NP\_031731.1 and Rat NP\_112409.2). Recommended concentration: 0.05-0.2 µg/ml. An additional band of unknown identity was also consistently observed at 23kDa. This band was successfully blocked by incubation with the immunizing peptide. We would appreciate any feedback from people in the field - have any such results been reported with other antibodies/lysates Have any further splice variants/modified forms been reported


 orb20642  
Immunofluorescence  
analysis of ...

**Protein Sequence**

QAGKSSDNRSR

**Clonality**

Polyclonal

**MW**

18.6

**Entrez**
[1153](#)
**Dilution Range**

ELISA: 1:16000, WB: 0.05-0.2 µg/ml

**Expiration Date**

12 months from date of receipt.