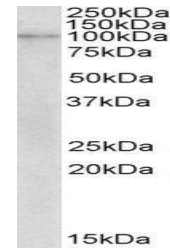


## Product Datasheet

### NLRX1 antibody (orb20605)

<b>Description</b>	Goat polyclonal to NLRX1
<b>Species/Host</b>	Goat
<b>Reactivity</b>	Human, Rat
<b>Conjugation</b>	Unconjugated
<b>Tested Applications</b>	ELISA, WB
<b>Target</b>	NLRX1 / NOD9
<b>Preservatives</b>	Supplied at 0.5 mg/ml in Tris saline, 0.02% sodium azide, pH 7.3 with 0.5% bovine serum albumin. Aliquot and store at -20°C. Minimize freezing and thawing.
<b>Storage</b>	Aliquot and store at -20°C. Minimize freezing and thawing.
<b>Note</b>	For research use only
<b>Application notes</b>	This antibody is expected to recognize both reported isoforms (NP_078894.2; NP_733840.1).ELISA: Peptide ELISA: antibody detection limit dilution 1:16000.WB: Approx 100kDa band observed in Human Breast cancer lysates (calculated MW of 108kDa according to NP_078894.2 and 102kDa according to NP_733840.1). Recommended concentration: 1-3 µg/ml.
<b>Protein Sequence</b>	NFSGETLDSTDPSN
<b>Clonality</b>	Polyclonal
<b>MW</b>	108; 102
<b>Entrez</b>	<a href="#">79671</a>
<b>Dilution Range</b>	ELISA: 1:16000, WB: 1-3 µg/ml
<b>Expiration Date</b>	12 months from date of receipt.



orb20605  
(2ug/ml)  
staining of  
Human  
Brea...