

## Product Datasheet

### TPPP antibody (orb20600)

**Description**

Goat polyclonal antibody to TPPP

**Species/Host**

Goat

**Reactivity**

Human

**Conjugation**

Unconjugated

**Tested Applications**

ELISA, IHC, WB

**Target**

TPPP/p25

**Preservatives**

Supplied at 0.5 mg/ml in Tris saline, 0.02% sodium azide, pH 7.3 with 0.5% bovine serum albumin. Aliquot and store at -20°C. Minimize freezing and thawing.

**Storage**

Aliquot and store at -20°C. Minimize freezing and thawing.

**Note**

For research use only

**Application notes**

ELISA: Peptide ELISA: antibody detection limit dilution 1:32000. WB: Approx 26kDa band observed in Human Brain (Cerebellum), Mouse and Rat Brain lysates (calculated MW of 23.7kDa according to NP\_008961.1). The observed molecular weight corresponds to earlier findings in literature with different antibodies (Acevedo et al, Exp Cell Res. 2007 Dec 10;313(20):4091-106; PMID: 18028908). Recommended concentration: 0.001-0.01µg/ml. Primary incubation was 1 hour. An additional band of unknown identity was also consistently observed at 17kDa. This band was successfully blocked by incubation with the immunizing peptide. IHC: In paraffin embedded Human Cerebellum shows strong staining of axonal bundles through the granular layer. Recommended concentration: 1-2µg/ml. Paraffin embedded Human Cortex. Recommended concentration: 3.75µg/ml.

**Protein Sequence**

DPSKDRAAKRLSLES

**Clonality**

Polyclonal

**MW**

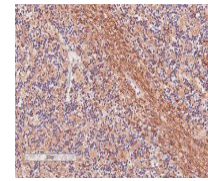
23.7

**Entrez**
[11076](#)
**Dilution Range**

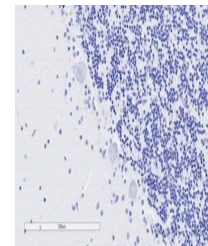
ELISA: 1:32000, WB: 0.001-0.01 µg/ml, IHC-P: 3.75 µg/ml

**Expiration Date**

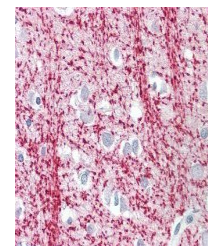
12 months from date of receipt.



Immunohistochemical staining of Human Ce...



Immunohistochemical staining of Human Ce...



Immunohistochemical staining of Human Co...