

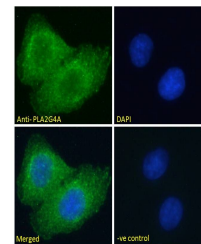
Product Datasheet

PLA2G4A antibody (orb20577)

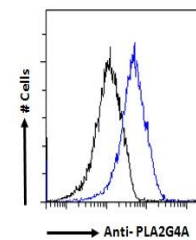
Description	Goat polyclonal antibody to PLA2G4A
Species/Host	Goat
Reactivity	Human, Mouse, Rat
Conjugation	Unconjugated
Tested Applications	ELISA, FC, IF, IHC, WB
Target	PLA2G4A
Preservatives	Supplied at 0.5 mg/ml in Tris saline, 0.02% sodium azide, pH 7.3 with 0.5% bovine serum albumin. Aliquot and store at -20°C. Minimize freezing and thawing.
Storage	Aliquot and store at -20°C. Minimize freezing and thawing.
Note	For research use only
Application notes	ELISA: Peptide ELISA: antibody detection limit dilution 1:32000.WB: Approx 90kDa band observed in lysates of cell lines HeLa and NIH3T3 (calculated MW of 85.2kDa according to NP_077734.1). Recommended concentration: 1-3 µg/ml.
Protein Sequence	QEKTFRQQRKEHIR
Clonality	Polyclonal
MW	85.2
Entrez	5321
Dilution Range	ELISA: 1:32000, WB: 0.3-1 µg/ml, IHC-P: 3.75 µg/ml
Expiration Date	12 months from date of receipt.



orb20577 (1ug/ml) staining of HeLa lysat...



Immunofluorescence analysis of A549 cell...



Flow cytometric analysis of A549 cells u...