

---

## Product Datasheet

### ACPP antibody (orb20559)

**Description**

Goat polyclonal to ACPP

**Species/Host**

Goat

**Reactivity**

Bovine, Canine, Human, Mouse, Rat

**Conjugation**

Unconjugated

**Tested**

ELISA, IF, IHC, WB

**Applications**
**Target**

ACPP / PAP

**Preservatives**

Supplied at 0.5 mg/ml in Tris saline, 0.02% sodium azide, pH 7.3 with 0.5% bovine serum albumin. Aliquot and store at -20°C. Minimize freezing and thawing.

**Storage**

Aliquot and store at -20°C. Minimize freezing and thawing.

**Note**

For research use only

**Application notes**

IHC: In paraffin embedded Human Prostate shows cytoplasm staining in some secretory cells of the gland. Recommended concentration, 3-5µg/ml.WB: Approx 50kDa band observed in Human Prostate lysates (calculated MW of 44.6kDa according to NP\_001090.2). The observed molecular weight corresponds to earlier findings in literature with different antibodies (Patel et al, ,Clin Chem. 1986 Oct;32(10):1832-5. PMID: 3530530). Recommended concentration: 0.3-1 µg/ml.

**Protein Sequence**

YGIHKQKEKSRLQ

**Clonality**

Polyclonal

**MW**

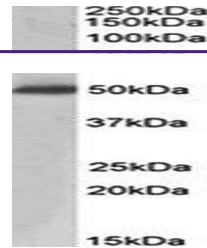
44.6

**Entrez**
[55](#)
**Dilution Range**

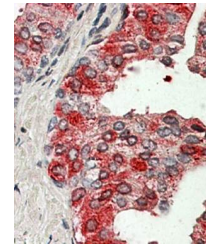
ELISA: 1:64000, WB: 0.3-1 µg/ml, IHC-P: 3-5µg/ml

**Expiration Date**

12 months from date of receipt.



Western blot analysis of human prostate ...



Immunohistochemical analysis of formalin...