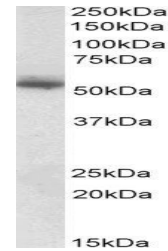


Product Datasheet

Copine 1 antibody (orb20558)

Description	Goat polyclonal to Copine 1
Species/Host	Goat
Reactivity	Human
Conjugation	Unconjugated
Tested Applications	ELISA, WB
Target	Copine 1
Preservatives	Supplied at 0.5 mg/ml in Tris saline, 0.02% sodium azide, pH 7.3 with 0.5% bovine serum albumin. Aliquot and store at -20°C. Minimize freezing and thawing.
Storage	Aliquot and store at -20°C. Minimize freezing and thawing.
Note	For research use only
Application notes	This antibody is expected to recognize isoform a and b (NP_003906.2; NP_690902.1). Reported variants represent identical protein: NP_690905.1, NP_690902.1, NP_690903.1, NP_690906.1, NP_690904.1, NP_690907.1, NP_690908.1.ELISA: Peptide ELISA: antibody detection limit dilution 1:16000.WB: Approx 55kDa band observed in Human Skin lysates (calculated MW of 59.1kDa according to NP_690902.1). Recommended concentration: 0.1-0.3 µg/ml.
Protein Sequence	APLKPLPPSAKDPA
Clonality	Polyclonal
MW	59.1; 59.7
Entrez	8904
Dilution Range	ELISA: 1:16000, WB: 0.1-0.3 µg/ml
Expiration Date	12 months from date of receipt.



orb20558
(0.1µg/ml)
staining of
Human Sk...