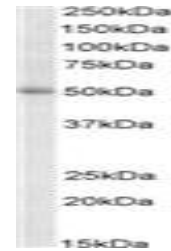


Product Datasheet

TRIP6 antibody (orb20508)

Description	Goat polyclonal to TRIP6
Species/Host	Goat
Reactivity	Bovine, Human
Conjugation	Unconjugated
Tested Applications	ELISA, WB
Target	TRIP6
Preservatives	Supplied at 0.5 mg/ml in Tris saline, 0.02% sodium azide, pH 7.3 with 0.5% bovine serum albumin. Aliquot and store at -20°C. Minimize freezing and thawing.
Storage	Aliquot and store at -20°C. Minimize freezing and thawing.
Note	For research use only
Application notes	ELISA: Peptide ELISA: antibody detection limit dilution 1:16000.WB: Approx 50kDa band observed in lysates of cell line K562 (calculated MW of 50.3kDa according to NP_003293.2). Recommended concentration: 1-3 µg/ml.
Protein Sequence	SHGVLQHTQGLP
Clonality	Polyclonal
MW	50.3
Entrez	7205
Dilution Range	ELISA: 1:16000, WB: 1-3 µg/ml
Expiration Date	12 months from date of receipt.



orb20508
(2ug/ml)
staining of
K562 lysat...