

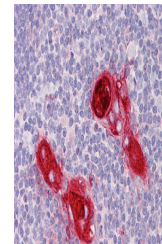
Product Datasheet

CXCR6 antibody (orb20503)

Description	Goat polyclonal antibody to CXCR6
Species/Host	Goat
Reactivity	Canine, Human, Mouse, Rat
Conjugation	Unconjugated
Tested Applications	ELISA, IHC, WB
Target	CXCR6
Preservatives	Supplied at 0.5 mg/ml in Tris saline, 0.02% sodium azide, pH 7.3 with 0.5% bovine serum albumin. Aliquot and store at -20°C. Minimize freezing and thawing.
Storage	Aliquot and store at -20°C. Minimize freezing and thawing.
Note	For research use only
Application notes	ELISA: Peptide ELISA: antibody detection limit dilution 1:2000.WB: Approx 40-45kDa band observed in HEK293 lysates (calculated MW of 39.3kDa according to NP_006555.1). Recommended concentration: 0.3-1 µg/ml.
Protein Sequence	SEDNSKTFSASHN
Clonality	Polyclonal
MW	39.3
Entrez	10663
Dilution Range	ELISA: 1:2000, WB: 0.3-1 µg/ml, IHC-P: 3.75 µg/ml
Expiration Date	12 months from date of receipt.



orb20503
(1ug/ml)
staining of
HEK293 lys...



orb20503
(3.75µg/ml)
staining of
paraff...