

---

## Product Datasheet

### BOD1 antibody (orb20486)

**Description**

Goat polyclonal antibody to BOD1

**Species/Host**

Goat

**Reactivity**

Canine, Human, Mouse, Rat

**Conjugation**

Unconjugated

**Tested Applications**

ELISA, IHC

**Target**

BOD1

**Preservatives**

Supplied at 0.5 mg/ml in Tris saline, 0.02% sodium azide, pH 7.3 with 0.5% bovine serum albumin. Aliquot and store at -20°C. Minimize freezing and thawing.

**Storage**

Aliquot and store at -20°C. Minimize freezing and thawing.

**Note**

For research use only

**Application notes**

ELISA: Peptide ELISA: antibody detection limit dilution 1:16000. WB: Preliminary experiments gave an approx 37kDa band in Human Lung and Testis lysates after 1 µg/ml antibody staining. Please note that currently we cannot find an explanation in the literature for the band we observe given the calculated size of 19.2kDa according to NP\_612378.1. The 37kDa band was successfully blocked by incubation with the immunizing peptide. We would appreciate any feedback from people in the field - have any results been reported with other antibodies/lysates Have any further splice variants/modified forms been reported

**Protein Sequence**

NRVSTHLDKQE

**Clonality**

Polyclonal

**MW**

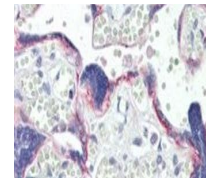
19.2; 13.3

**Entrez**
[91272](#)
**Dilution Range**

ELISA: 1:16000, WB: 1 µg/ml, IHC-P: 10 µg/ml

**Expiration Date**

12 months from date of receipt.



Immunohistochemical staining of Human Placenta