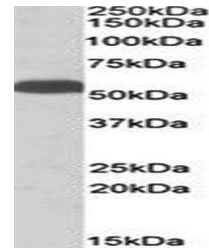


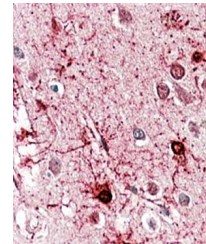
## Product Datasheet

### GLUD1 / GLUD2 antibody (orb20463)

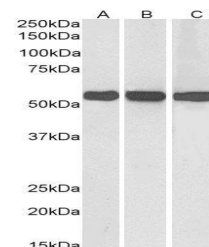
<b>Description</b>	Goat polyclonal antibody to GLUD1 / GLUD2
<b>Species/Host</b>	Goat
<b>Reactivity</b>	Bovine, Canine, Human, Mouse, Rat
<b>Conjugation</b>	Unconjugated
<b>Tested Applications</b>	ELISA, IF, IHC, WB
<b>Target</b>	Glutamate Dehydrogenase
<b>Preservatives</b>	Supplied at 0.5 mg/ml in Tris saline, 0.02% sodium azide, pH 7.3 with 0.5% bovine serum albumin. Aliquot and store at -20°C. Minimize freezing and thawing.
<b>Storage</b>	Aliquot and store at -20°C. Minimize freezing and thawing.
<b>Note</b>	For research use only
<b>Application notes</b>	IHC: In paraffin embedded Human Cerebral Cortex shows mitochondrial staining in neuronal cell bodies and axons. Recommended concentration, 3-5µg/ml.WB: Approx 55kDa band observed in Human Liver and in Mouse Liver lysates (calculated MW of 61.4kDa according to Human NP_005262.1 and NP_036216.2 and of 61.3 according to Mouse NP_032159.1. Recommended concentration: 0.3-1 µg/ml.
<b>Protein Sequence</b>	ESEEQKRRNRVGRILR
<b>Clonality</b>	Polyclonal
<b>MW</b>	61.4
<b>Entrez</b>	<a href="#">2747</a> , <a href="#">2746</a>
<b>Dilution Range</b>	ELISA: 1:32000, WB: 0.3-1 µg/ml, IHC-P: 3-5 µg/ml
<b>Expiration Date</b>	12 months from date of receipt.



Western blot analysis of mouse liver lys...



Immunohistochemical analysis of formalin...



Western blot analysis of Human (Lane1), ...