

---

## Product Datasheet

### PEBP4 antibody (orb20392)

**Description**

Goat polyclonal antibody to PEBP4

**Species/Host**

Goat

**Reactivity**

Human

**Conjugation**

Unconjugated

**Tested**

ELISA, IHC, WB

**Applications**
**Target**

PEBP4

**Preservatives**

Supplied at 0.5 mg/ml in Tris saline, 0.02% sodium azide, pH 7.3 with 0.5% bovine serum albumin. Aliquot and store at -20°C. Minimize freezing and thawing.

**Storage**

Aliquot and store at -20°C. Minimize freezing and thawing.

**Note**

For research use only

**Application notes**

ELISA: Peptide ELISA: antibody detection limit dilution 1:4000. WB: Approx 26kDa band observed in Human Heart lysates (calculated MW of 25.7kDa according to NP\_659399.2). Recommended concentration: 1-3 µg/ml. An additional band of unknown identity was also consistently observed at 30kDa. This band was successfully blocked by incubation with the immunizing peptide. We would appreciate any feedback from people in the field - have any such results been reported with other antibodies/lysates Have any further splice variants/modified forms been reported

**Protein Sequence**

RERASEPKHKNQAE

**Clonality**

Polyclonal

**MW**

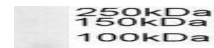
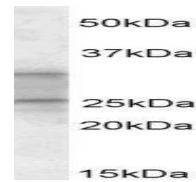
25.7

**Entrez**
[157310](#)
**Dilution Range**

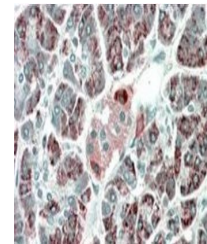
ELISA: 1:4000, WB: 1-3 µg/ml, IHC-P: 5-10µg/ml

**Expiration Date**

12 months from date of receipt.

Western blot analysis of Human Heart lysates



Immunohistochemical staining of Human Pancreas