

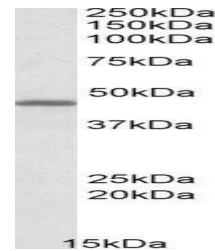
## Product Datasheet

### GPR17 antibody (orb20349)

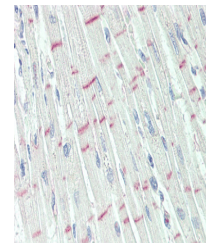
<b>Description</b>	Goat polyclonal antibody to GPR17
<b>Species/Host</b>	Goat
<b>Reactivity</b>	Bovine, Human, Mouse, Rat
<b>Conjugation</b>	Unconjugated
<b>Tested Applications</b>	ELISA, IF, WB
<b>Target</b>	GPR17
<b>Preservatives</b>	Supplied at 0.5 mg/ml in Tris saline, 0.02% sodium azide, pH 7.3 with 0.5% bovine serum albumin. Aliquot and store at -20°C. Minimize freezing and thawing.
<b>Storage</b>	Aliquot and store at -20°C. Minimize freezing and thawing.
<b>Note</b>	For research use only
<b>Application notes</b>	ELISA: Peptide ELISA: antibody detection limit dilution 1:1000.WB: Approx 45kDa band observed in Human Brain (Cerebellum), and in Mouse Brain and Rat Brain lysates (calculated MW of 41.0kDa according to Human NP_005282.1). Recommended concentration: 0.1-0.3 µg/ml.
<b>Protein Sequence</b>	EGKTNESSLSAKSE
<b>Clonality</b>	Polyclonal
<b>MW</b>	41
<b>Entrez</b>	<b>2840</b>
<b>Dilution Range</b>	ELISA: 1:4000, WB: 2-3 µg/ml, IHC-P: 10 µg/ml
<b>Expiration Date</b>	12 months from date of receipt.



Western blot analysis of Human Cerebellu...



Western blot analysis of Rat Brain lysat...



Immunohistochemical staining of Human He...