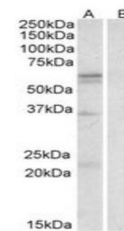


## Product Datasheet

### SLC7A5 antibody (orb20330)

<b>Description</b>	Goat polyclonal antibody to SLC7A5
<b>Species/Host</b>	Goat
<b>Reactivity</b>	Canine, Human
<b>Conjugation</b>	Unconjugated
<b>Tested Applications</b>	ELISA, WB
<b>Target</b>	LAT1 / SLC7A5
<b>Preservatives</b>	Supplied at 0.5 mg/ml in Tris saline, 0.02% sodium azide, pH 7.3 with 0.5% bovine serum albumin. Aliquot and store at -20°C. Minimize freezing and thawing.
<b>Storage</b>	Aliquot and store at -20°C. Minimize freezing and thawing.
<b>Note</b>	For research use only
<b>Application notes</b>	ELISA: Peptide ELISA: antibody detection limit dilution 1:64000.WB: Approx 60kDa band observed in Human Spleen lysates (calculated MW of 55.0kDa according to NP_003477.4). Recommended concentration: 1-3 µg/ml. Some minor background is detected and is blocked by the immunizing peptide. We call for caution when used for other assays than Western blot.
<b>Protein Sequence</b>	RHRKPELERPIKVN
<b>Clonality</b>	Polyclonal
<b>MW</b>	55
<b>Entrez</b>	<b>8140</b>
<b>Dilution Range</b>	ELISA: 1:64000, WB: 1-3 µg/ml
<b>Expiration Date</b>	12 months from date of receipt.



Western blot analysis of Human Spleen ly...