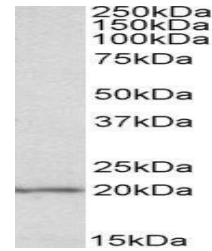


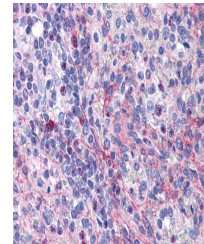
Product Datasheet

EIF5A antibody (orb20300)

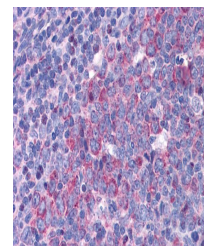
| | |
|----------------------------|--|
| Description | Goat polyclonal antibody to EIF5A |
| Species/Host | Goat |
| Reactivity | Human |
| Conjugation | Unconjugated |
| Tested Applications | ELISA, IHC, WB |
| Target | eIF5A |
| Preservatives | Supplied at 0.5 mg/ml in Tris saline, 0.02% sodium azide, pH 7.3 with 0.5% bovine serum albumin. Aliquot and store at -20°C. Minimize freezing and thawing. |
| Storage | Aliquot and store at -20°C. Minimize freezing and thawing. |
| Note | For research use only |
| Application notes | ELISA: Peptide ELISA: antibody detection limit dilution 1:128000.WB: Approx 20kDa band observed in MOLT4 lysates (calculated MW of 20.2kDa according to NP_001137232.1). Recommended concentration: 1-3 µg/ml. |
| Protein Sequence | RPPHRASFLKRLESK |
| Clonality | Polyclonal |
| MW | 20.2 |
| Entrez | 1984 |
| Dilution Range | ELISA: 1:128000, WB: 1-3 µg/ml, IHC-P: 3.75 µg/ml |
| Expiration Date | 12 months from date of receipt. |



Western blot analysis of MOLT4 lysate us...



Immunohistochemical staining of Human Sp...



Immunohistochemical staining of Human To...